

APPENDIX B – PRESENTATION



Public Information Meeting

August 2, 2023



PRESENTERS



Dan Prevost

Project Manager, Parsons



Mindy Peterson

Public Involvement Director, Parsons



AGENDA TOPICS

1. **Project Overview**
2. **Draft Purpose and Need**
3. **Preliminary Alternatives**
4. **Next Steps**
5. **Follow Our Progress**
6. **Contact Us**



LINK101

PUBLIC INFORMATION MEETING

- **Open house** and presentation
- **Discussions** at stations continue following presentation
- **Comment Session** at 7 p.m.
- **Review** draft Purpose and Need
- **Review** preliminary alternatives
- **Talk** with Project Team members
- **Complete** a comment form



LINK101



PROJECT OVERVIEW



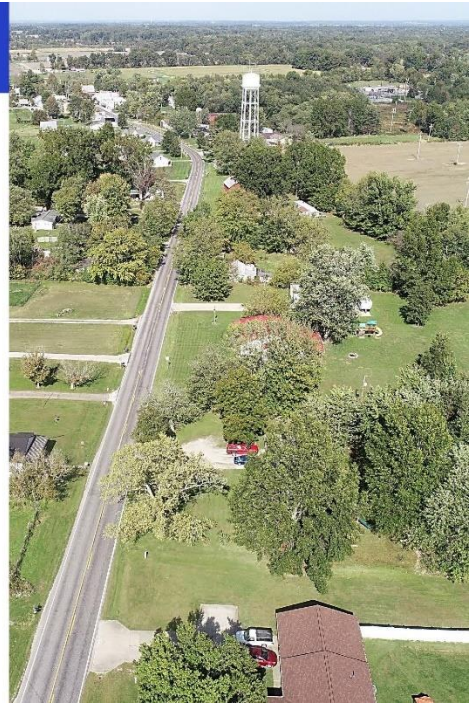
PROJECT OVERVIEW

- Link 101 is an Indiana Department of Transportation project in southeast Indiana.
- It's evaluating alternatives for an improved SR 101 connection between the Markland Dam and US 50.
- The project is expected to improve connectivity in southeastern Indiana.
- The project area includes portions of Switzerland, Ohio, Dearborn and Ripley counties.



WHERE WE ARE

- The project is in the environmental and preliminary design stage.
- The draft Purpose and Need (P&N) is available for review.
- The P&N is “the why” for the project.
- Preliminary alternatives have been developed.
- The wide range of alternatives is based on data gathered by the Project Team and input from the public.



THE BIG PICTURE

- The ten preliminary alternatives will go through a screening process.
- A smaller number of alternatives will be carried forward for more detailed analysis.
- Benefits, impacts and costs will help identify a single preferred alternative and a formal comment period will follow.
- The preferred alternative is expected to be identified in the draft environmental document in fall 2024.
- A timeline for construction will be determined at the end of the environmental study.



LINK 101



PURPOSE AND NEED



PURPOSE AND NEED STATEMENT

- Project **determines** the **Purpose and Need**
- It's the **WHY**
 - Tells **why** the project is being conducted
 - Provides the **general vision** of the project
 - States the intended or **desired outcomes**
 - Expresses the **transportation issues** and **problems**
 - **Foundation** of decision-making process and project design



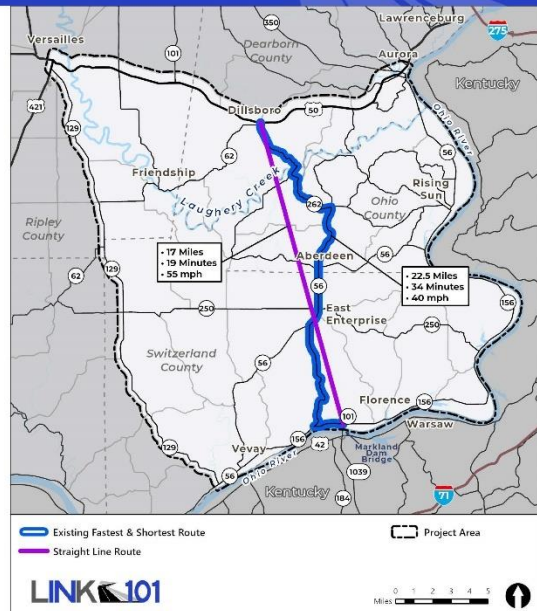
LINK 101

TRAVEL TIME AND DISTANCE

Need

- No direct path from Markland Dam Bridge to US 50
- 15 minutes and 5.5 miles longer than straight line path
- Truck restrictions increase travel times for trucks

Purpose | Reduce travel time within the project area by improving connectivity.

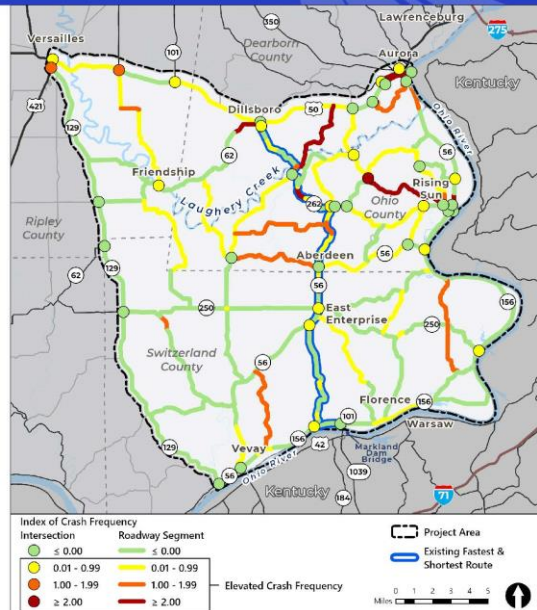


SAFETY

Need

- Elevated crash locations along the existing fastest and shortest route
- Elevated crash locations throughout the project area, with a higher concentration in the northern half

Purpose | Improve safety by reducing vehicle miles traveled (VMT) on roadways with elevated crash locations.

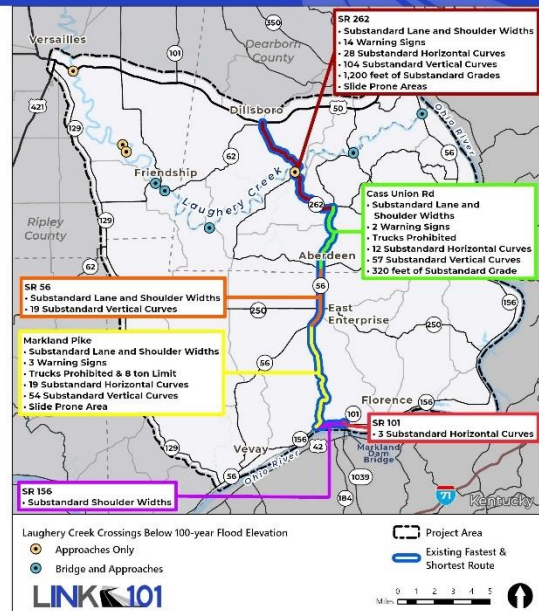


GEOMETRIC DEFICIENCIES

Need

- Existing fastest/shortest route has narrow lanes/shoulders, sharp curves, and poor sight distance.
- Geometric deficiencies contribute to poor safety outcomes, travel times, and connectivity.

Purpose | Provide roadway meeting current design standards



GEOMETRIC DEFICIENCIES

Need

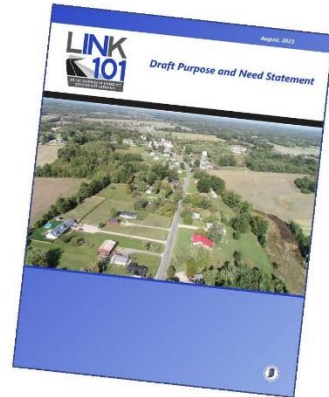
- Laughery Creek crossings in project area have roadway approaches and/or bridges below the 100-year flood elevation, jeopardizing access and safety during flood events.
- Slide-prone areas create potential access and safety issues.

Purpose | Provide a roadway that is above the Laughery Creek 100-year floodplain elevation and minimizes the risk of slides.



PURPOSE AND NEED

- **We want your feedback** on the draft Purpose and Need.
- Several ways to share comments:
 - **Tonight** at the comment station
 - **Online** at Link101Corridor.com
 - **Via mail** to project office
 - **Project office** visit
- Comments associated with public meetings accepted through **September 8, 2023**.



LINK 101

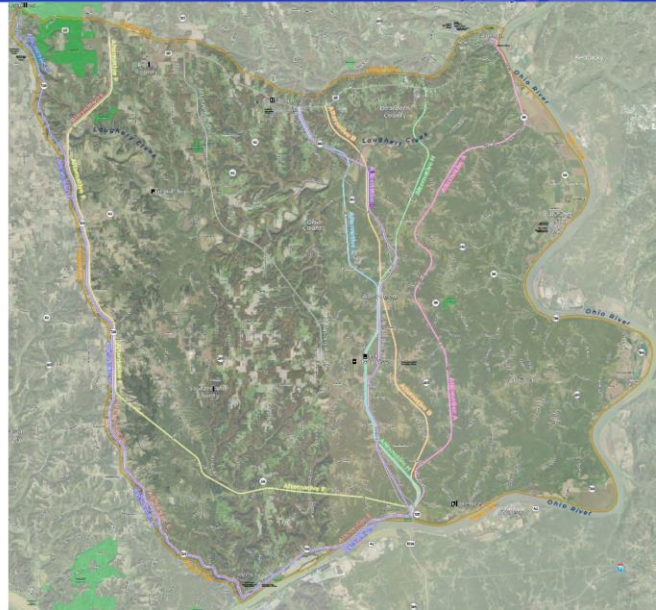


PRELIMINARY ALTERNATIVES



PRELIMINARY ALTERNATIVES

- Alternatives development starts with Purpose and Need
- Data gathered and additional analysis guides alternatives development
- Public and agency feedback also guides development



PRELIMINARY ALTERNATIVES

- Key factors in development of general alignment:
 - All start at SR 101 at Markland Dam
 - Considers range of destinations along US 50
 - Considers areas of challenging terrain
 - Ohio River valley
 - Steep ravines
 - Laughery Creek valley



LINK 101

PRELIMINARY ALTERNATIVES

- Avoided impacts to residences, businesses, and environmental resources where possible
- Preliminary alternatives take advantage of existing roadway corridors where possible
- Range of routes help project team better understand the pros and cons of each alternative

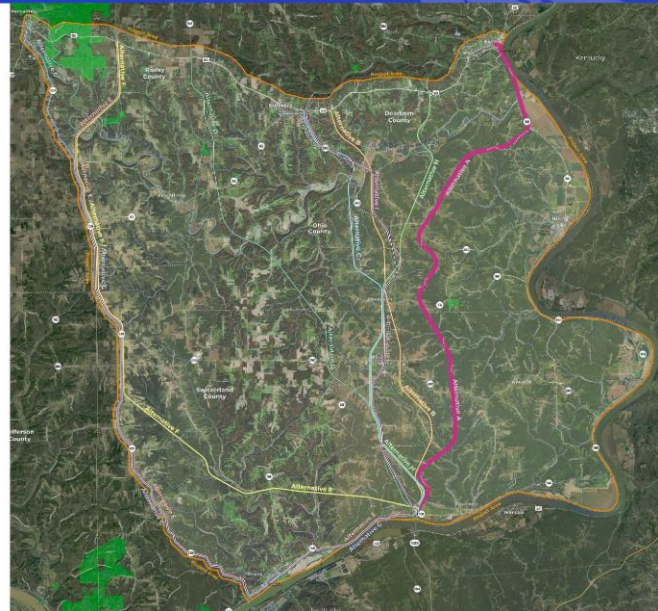


LINK 101

PRELIMINARY ALTERNATIVES

Alternative A

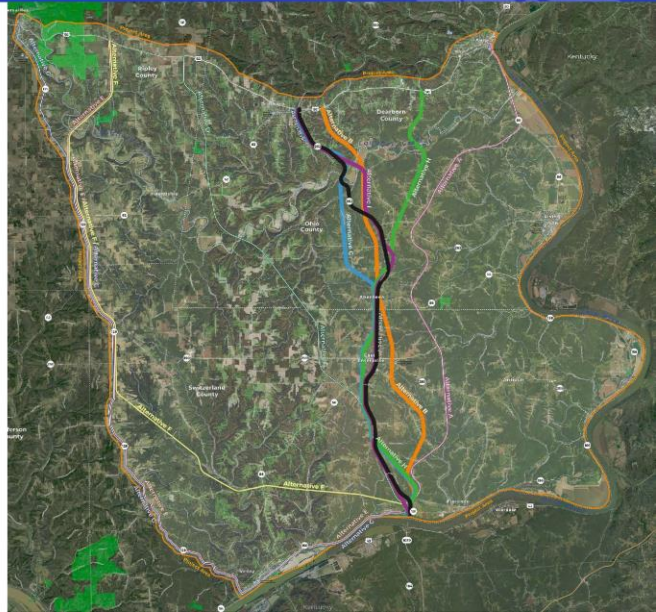
- Connects to Aurora



PRELIMINARY ALTERNATIVES

Alternatives B/C/H/I/J

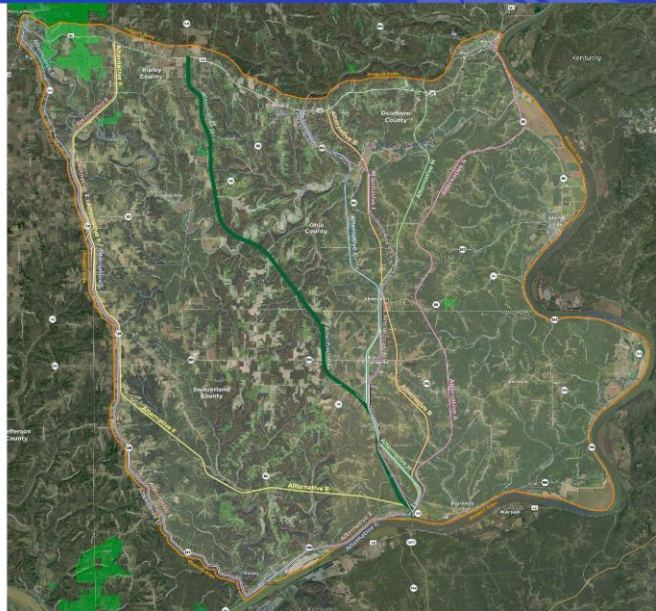
- These alternatives provide Dillsboro connection
- Alternatives C, H, I, and J use a combination of existing roads and new alignment
- Alternative B uses all new alignment (only alternative)
- Laughery Creek crossings are generally in the area of SR 262 or Nelson Road.



PRELIMINARY ALTERNATIVES

Alternative D

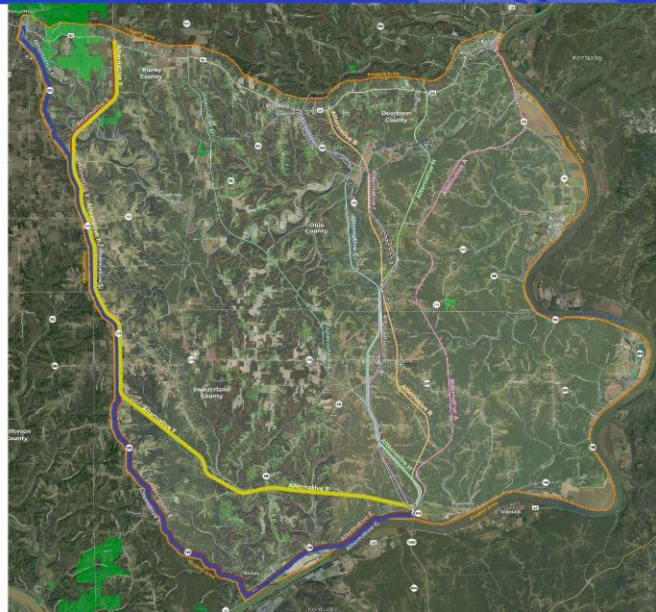
- Connects to SR 101 at US 50
- All on new alignment except for one mile on Markland Pike



PRELIMINARY ALTERNATIVES

Alternatives E/F/G

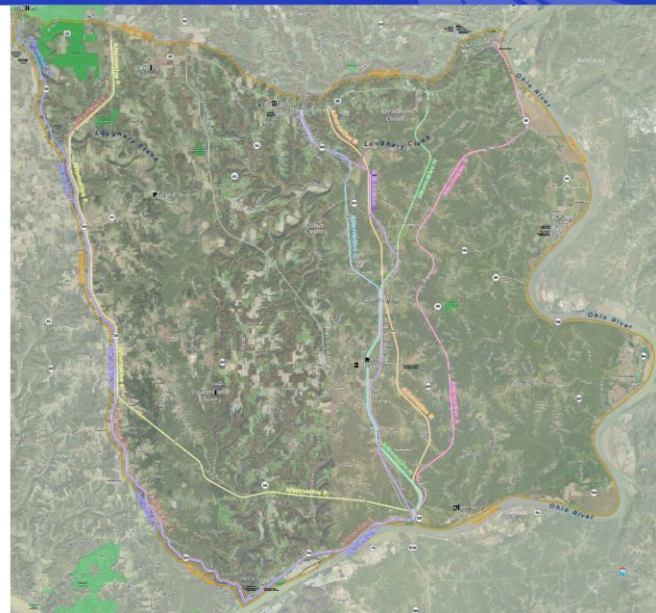
- Use portions of SR 156/56/129
- Connect to US 50 in/near Versailles
- Options to travel through or bypass Vevay and Versailles



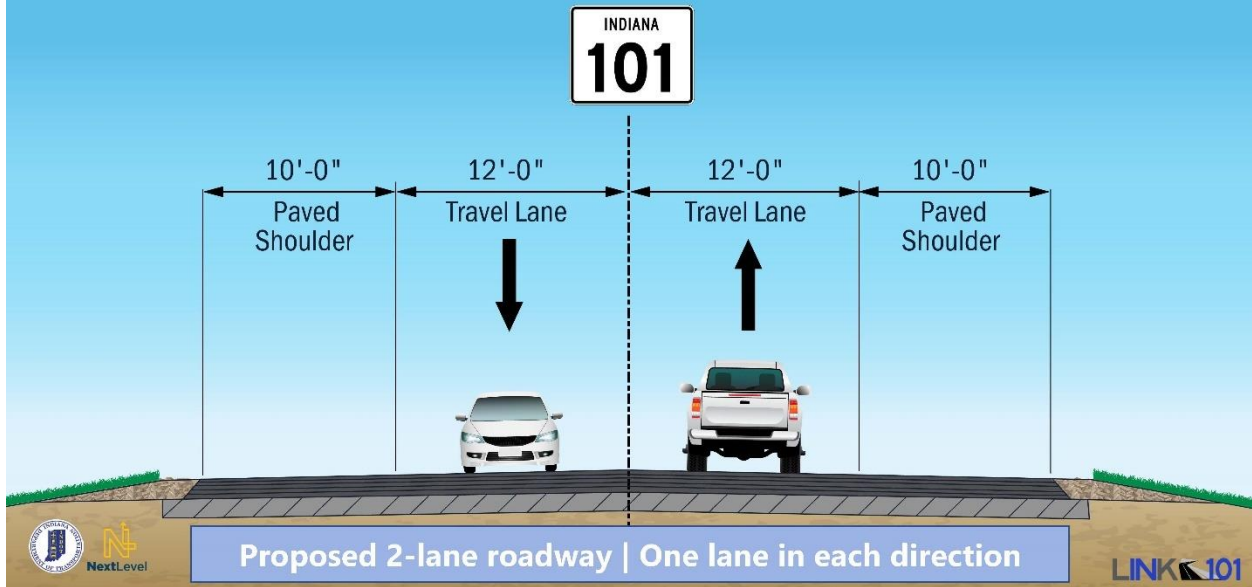
PRELIMINARY ALTERNATIVES FEEDBACK

We want your input!

- Which preliminary alternatives meet the needs of the project area and why?
- Which connection location along US 50 best meets the needs of the project area?
- Do you have suggestions for improving any alternatives?



PROPOSED TYPICAL SECTION



PROJECT PROCESS



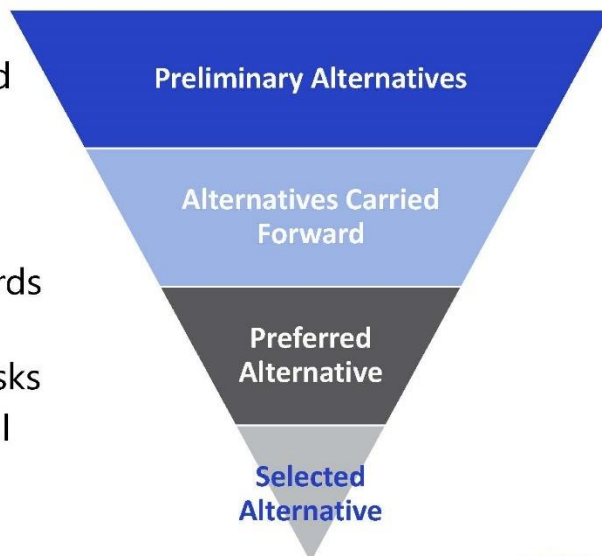
WHAT IS HAPPENING NOW



LINK101

WHAT HAPPENS NEXT

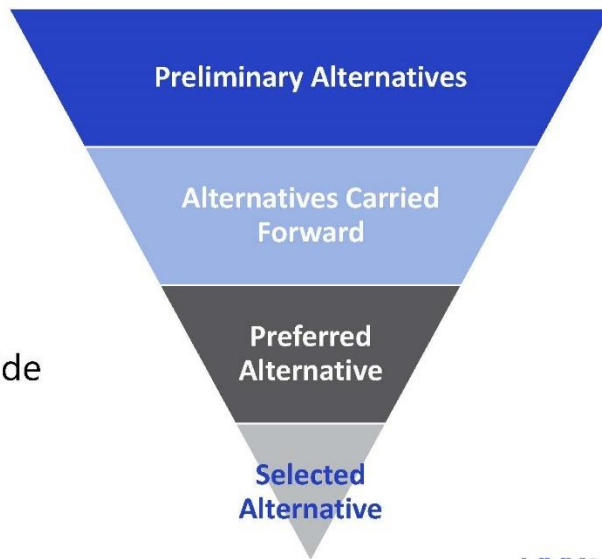
- Alternatives are screened based on Purpose and Need
 - Reduce travel time
 - Improve safety
 - Meet current design standards
 - Above Laughery Creek floodplain; minimize slide risks
- Alternatives carried forward will be developed further



LINK101

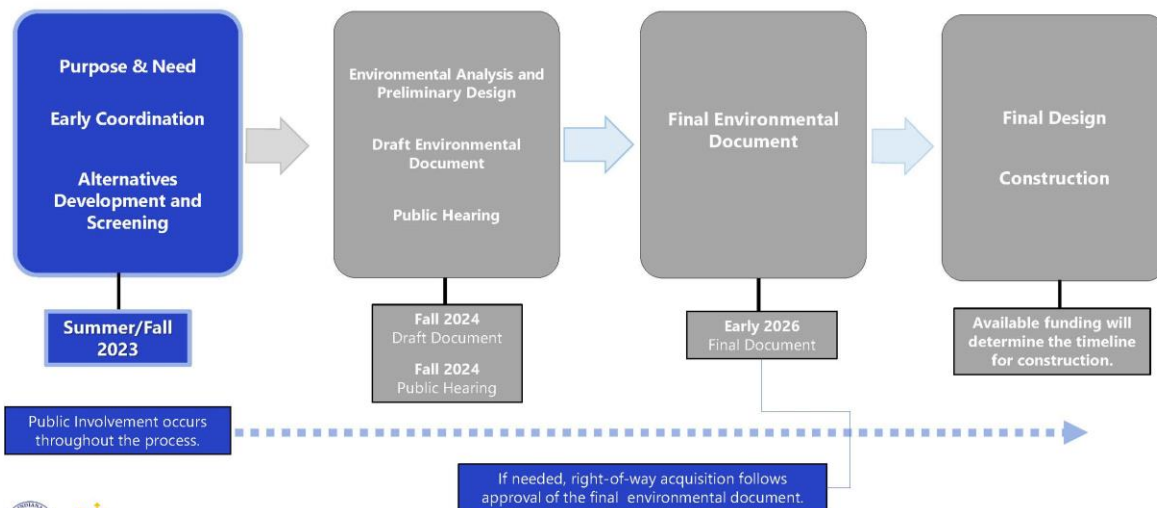
WHAT HAPPENS NEXT

- Feedback from the public and agencies guides alternative refinements.
- Elements from different alternatives may be combined or new routes may emerge.
- Detailed field surveys will provide additional data to help screen alternatives.



LINK101

ENVIRONMENTAL ANALYSIS PROCESS



LINK101



NEXT STEPS



WHAT TO EXPECT

LINK 101 PROJECT TIMELINE



LINK 101

PUBLIC INFORMATION MEETINGS

- Public meetings **August 2 and August 3**
 - Thursday, August 3 | Switzerland Co. Middle/Jefferson-Craig Elementary from 5:30 to 7:30 p.m. with 6 p.m. presentation
- Virtual meeting **Tuesday, Aug. 8**
 - 6 p.m. start time
 - Register at bit.ly/VirtualMeetingLink101
- Public hearings expected Fall 2024; preferred alternative identified



LINK101

WE'RE LISTENING

- Community Advisory Committee
- Environmental Justice Working Group
- Resource Agency Committee
- Section 106 Consulting Parties
- Small group presentations
- Public meetings at milestones
- Social media and project website
- Project office in Vevay
- Mobile Office Hours in Dillsboro



LINK101

SHARE YOUR FEEDBACK

- **We want your feedback** on the draft Purpose and Need and preliminary alternatives.
- Several ways to share comments:
 - **Tonight** by completing a comment form
 - **Online** at Link101Corridor.com
 - **Via mail** to project office
 - **Project office** or **mobile office** visit
 - **Locations** around project area
- Comments associated with public meetings accepted through **September 8, 2023**.



LINK101

SHARE YOUR FEEDBACK

Additional Opportunities: Verbal Comments

Recording Station

- Located within the Comment Station
- Talk to a Project Team member
- Transcribed comments added to project record

Comment Session at 7 p.m.

- Sign up to speak; speakers called in order
- Comments limited to 1:30 minutes
- Comments will be recorded.
- Transcribed comments added to project record



LINK101

MOBILE OFFICE HOURS

Dillsboro Public Library

- Open house format
- Stop by with questions, share feedback
- **August 8th** and **15th** from **11 a.m.** to **5 p.m.**
- Review maps and materials, complete a comment form and talk with the Project Team.



Dillsboro Public Library
10151 Library Lane
Dillsboro, IN 47018



PROJECT MATERIALS AT AREA LOCATIONS

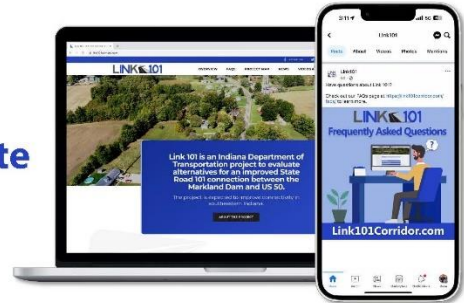
- Project materials will be posted at a dozen locations in the project area.
- Review materials and share feedback.
- Project Team will collect completed forms at the end of the comment period.

| Location | City |
|--------------------------------------|--------------|
| Dillsboro Public Library | Dillsboro |
| Dillsboro Town Hall | Dillsboro |
| Dearborn County Chamber of Commerce | Lawrenceburg |
| Ohio County Public Library | Rising Sun |
| Rising Sun City Building | Rising Sun |
| Versailles Town Hall | Versailles |
| Ripley County Indiana Tourism Bureau | Versailles |
| Switzerland County Public Library | Vevay |
| Switzerland County YMCA | Vevay |



FOLLOW OUR PROGRESS

- Link101Corridor.com
- Text "INDOT LINK101" to 468311
- Sign up for **email updates** on **website**
- Social Media
 - **Facebook:** Link 101 Corridor
 - **Twitter:** @Link101Corridor



LINK101

PROJECT OFFICE

Link 101 Project Office

Switzerland County Technology and Education Center, 2nd floor

 **844-Link101** (844-546-5101)

 Link101Corridor.com

 info@Link101Corridor.com



We're open **Monday** and **Wednesday** from **10 a.m. to 3 p.m.** and by appointment.





THANK YOU

August 2, 2023

A virtual presentation was held via Microsoft Teams the evening following the in-person public meeting. Presentation content mirrored this presentation and included a slide on how to use the virtual chat to ask questions and share feedback.