



Public Information Meeting

August 2, 2023



PRESENTERS



Dan Prevost

Project Manager, Parsons



Mindy Peterson

Public Involvement Director, Parsons

AGENDA TOPICS

1. **Project Overview**
2. **Draft Purpose and Need**
3. **Preliminary Alternatives**
4. **Next Steps**
5. **Follow Our Progress**
6. **Contact Us**

PUBLIC INFORMATION MEETING

- **Open house** and presentation
- **Discussions** at stations continue following presentation
- **Comment Session** at 7 p.m.
- **Review** draft Purpose and Need
- **Review** preliminary alternatives
- **Talk** with Project Team members
- **Complete** a comment form





PROJECT OVERVIEW

PROJECT OVERVIEW

- Link 101 is an Indiana Department of Transportation project in southeast Indiana.
- It's evaluating alternatives for an improved SR 101 connection between the Markland Dam and US 50.
- The project is expected to improve connectivity in southeastern Indiana.
- The project area includes portions of Switzerland, Ohio, Dearborn and Ripley counties.



WHERE WE ARE

- The project is in the environmental and preliminary design stage.
- The draft Purpose and Need (P&N) is available for review.
- The P&N is “the why” for the project.
- Preliminary alternatives have been developed.
- The wide range of alternatives is based on data gathered by the Project Team and input from the public.



THE BIG PICTURE

- The ten preliminary alternatives will go through a screening process.
- A smaller number of alternatives will be carried forward for more detailed analysis.
- Benefits, impacts and costs will help identify a single preferred alternative and a formal comment period will follow.
- The preferred alternative is expected to be identified in the draft environmental document in fall 2024.
- A timeline for construction will be determined at the end of the environmental study.





PURPOSE AND NEED

PURPOSE AND NEED STATEMENT

- Project *determines* the *Purpose and Need*
- It's the **WHY**
 - Tells *why* the project is being conducted
 - Provides the *general vision* of the project
 - States the intended or *desired outcomes*
 - Expresses the *transportation issues* and *problems*
 - *Foundation* of decision-making process and project design

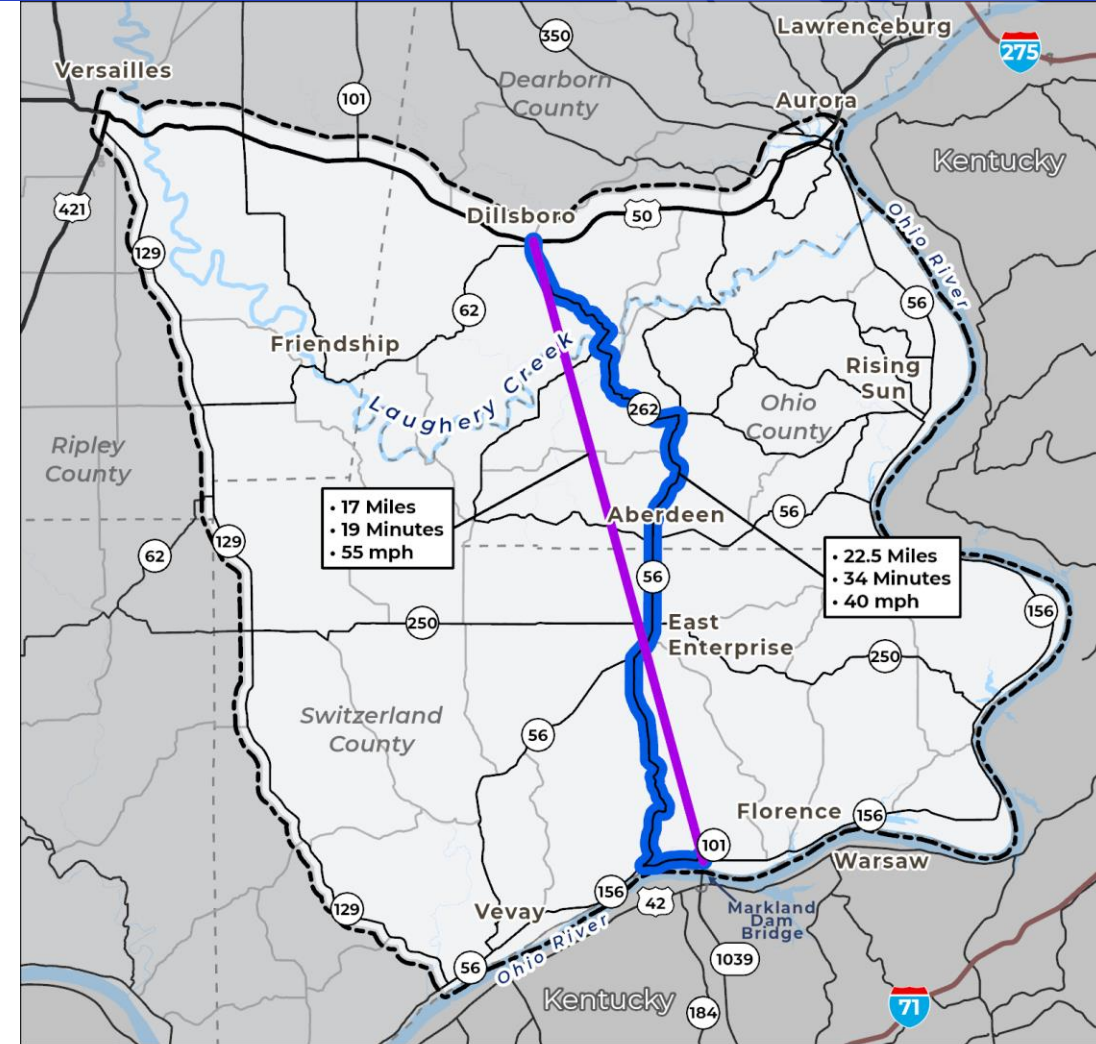


TRAVEL TIME AND DISTANCE

Need

- No direct path from Markland Dam Bridge to US 50
- 15 minutes and 5.5 miles longer than straight line path
- Truck restrictions increase travel times for trucks

Purpose | Reduce travel time within the project area by improving connectivity.



Existing Fastest & Shortest Route
Straight Line Route

Project Area

LINK 101

0 1 2 3 4 5
Miles

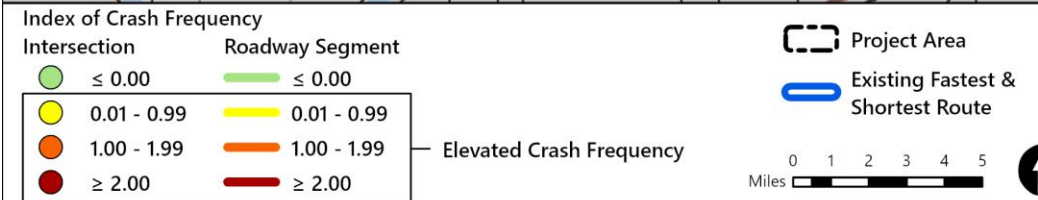
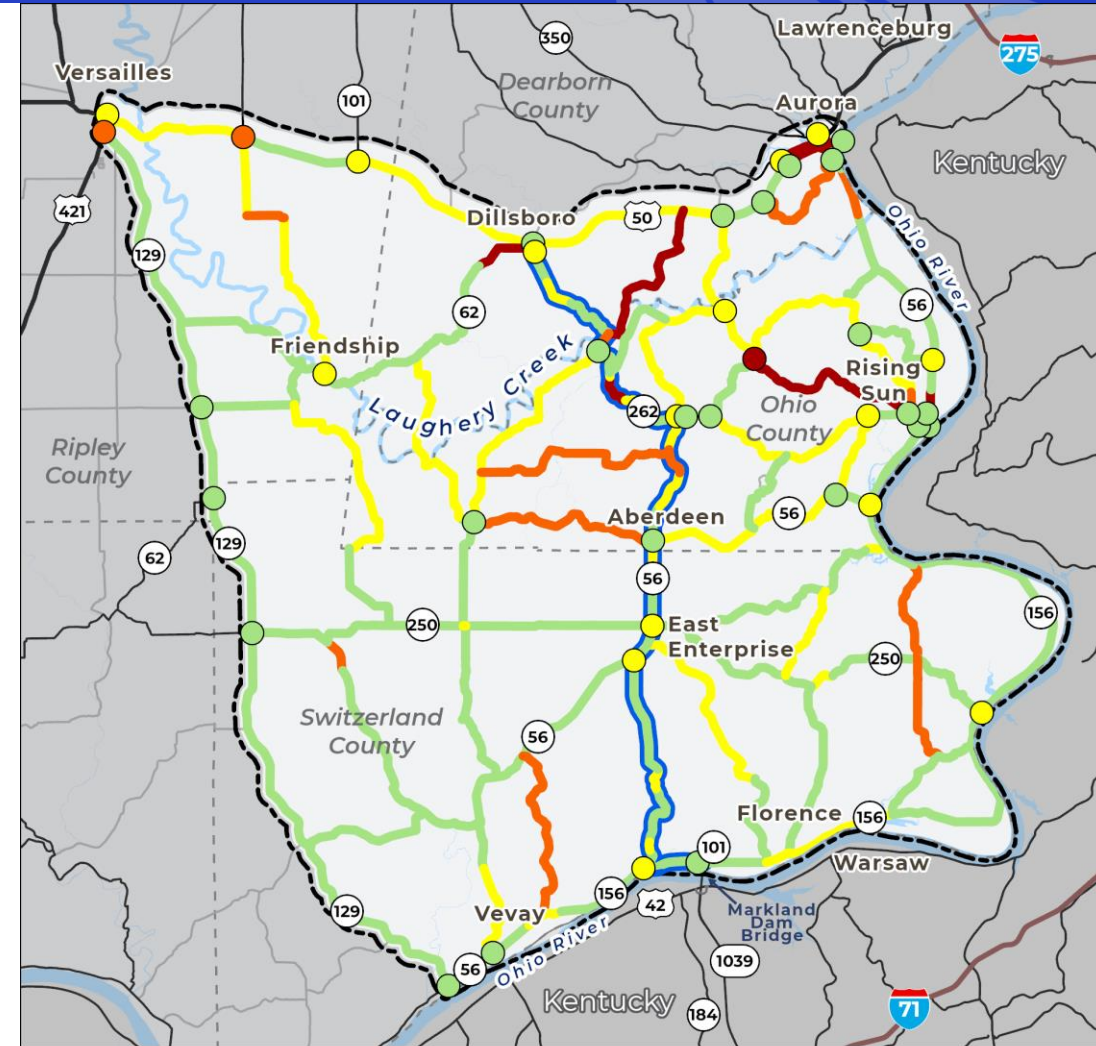


SAFETY

Need

- Elevated crash locations along the existing fastest and shortest route
- Elevated crash locations throughout the project area, with a higher concentration in the northern half

Purpose | Improve safety by reducing vehicle miles traveled (VMT) on roadways with elevated crash locations.

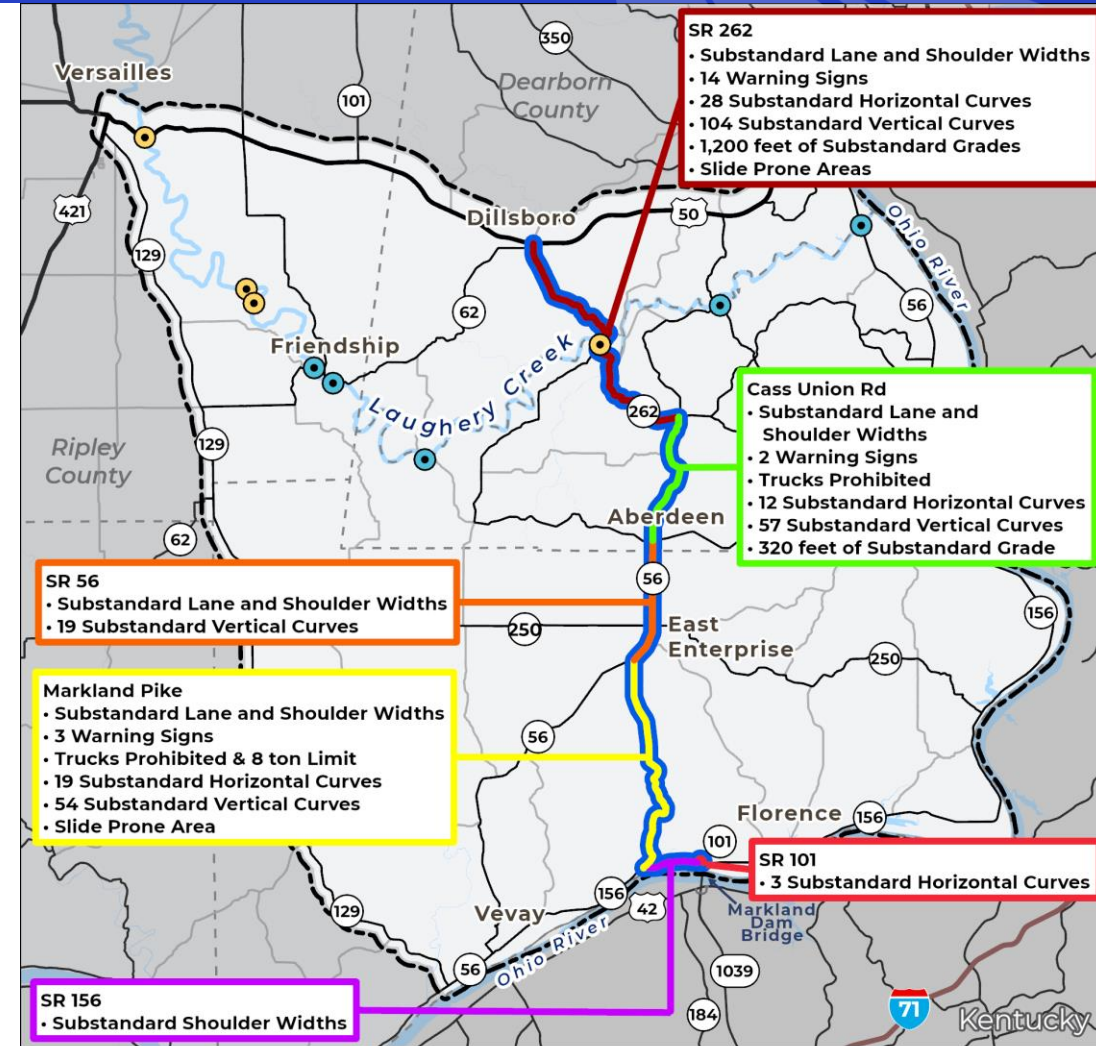


GEOMETRIC DEFICIENCIES

Need

- Existing fastest/shortest route has narrow lanes/shoulders, sharp curves, and poor sight distance.
- Geometric deficiencies contribute to poor safety outcomes, travel times, and connectivity.

Purpose | Provide roadway meeting current design standards



Laughery Creek Crossings Below 100-year Flood Elevation

- Approaches Only
- Bridge and Approaches

Project Area

Existing Fastest & Shortest Route

LINK 101

0 1 2 3 4 5
Miles



GEOMETRIC DEFICIENCIES



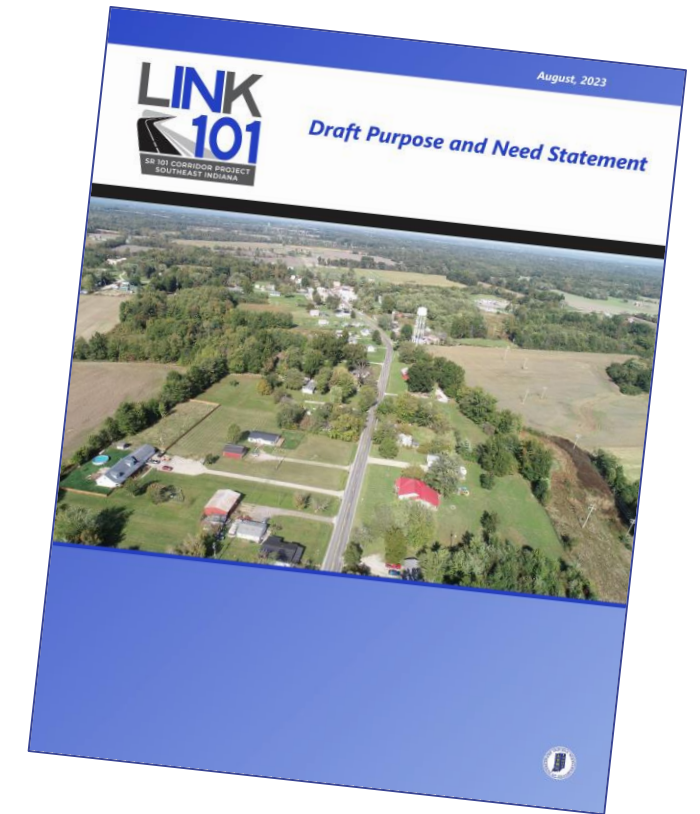
Need

- Laughery Creek crossings in project area have roadway approaches and/or bridges below the 100-year flood elevation, jeopardizing access and safety during flood events.
- Slide-prone areas create potential access and safety issues.

Purpose | Provide a roadway that is above the Laughery Creek 100-year floodplain elevation and minimizes the risk of slides.

PURPOSE AND NEED

- **We want your feedback** on the draft Purpose and Need.
- Several ways to share comments:
 - **Tonight** at the comment station
 - **Online** at Link101Corridor.com
 - **Via mail** to project office
 - **Project office** visit
- Comments associated with public meetings accepted through **September 8, 2023**.



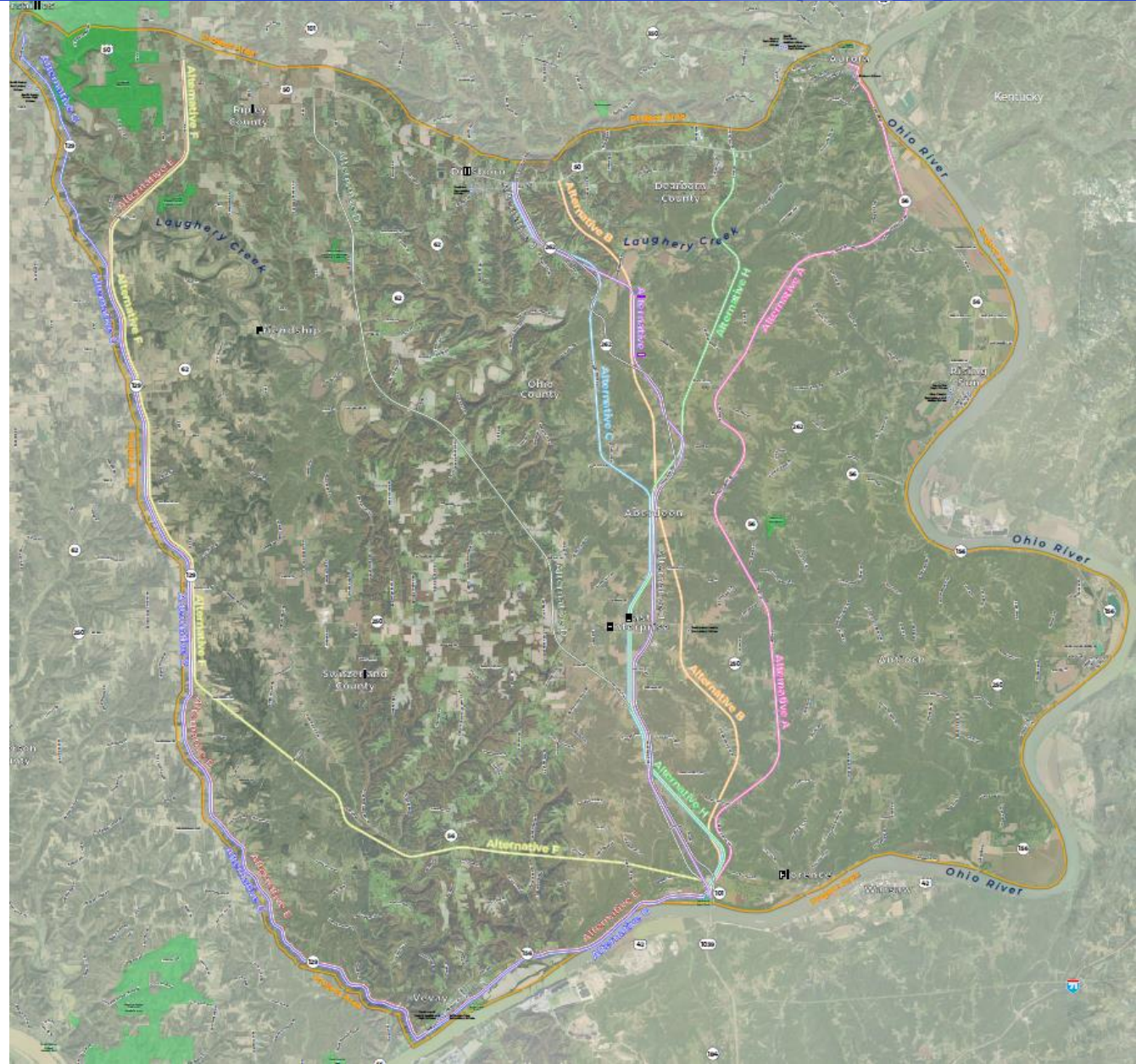


PRELIMINARY ALTERNATIVES



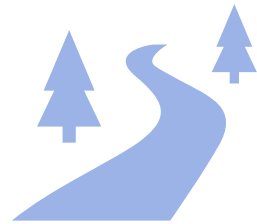
PRELIMINARY ALTERNATIVES

- Alternatives development starts with Purpose and Need
- Data gathered and additional analysis guides alternatives development
- Public and agency feedback also guides development



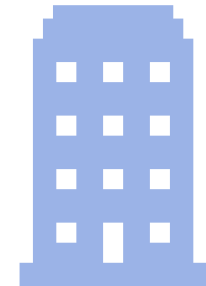
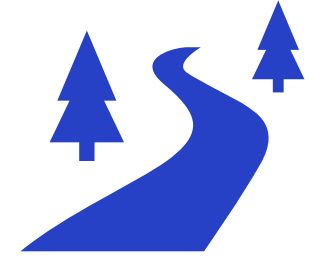
PRELIMINARY ALTERNATIVES

- Key factors in development of general alignment:
 - All start at SR 101 at Markland Dam
 - Considers range of destinations along US 50
 - Considers areas of challenging terrain
 - Ohio River valley
 - Steep ravines
 - Laughery Creek valley



PRELIMINARY ALTERNATIVES

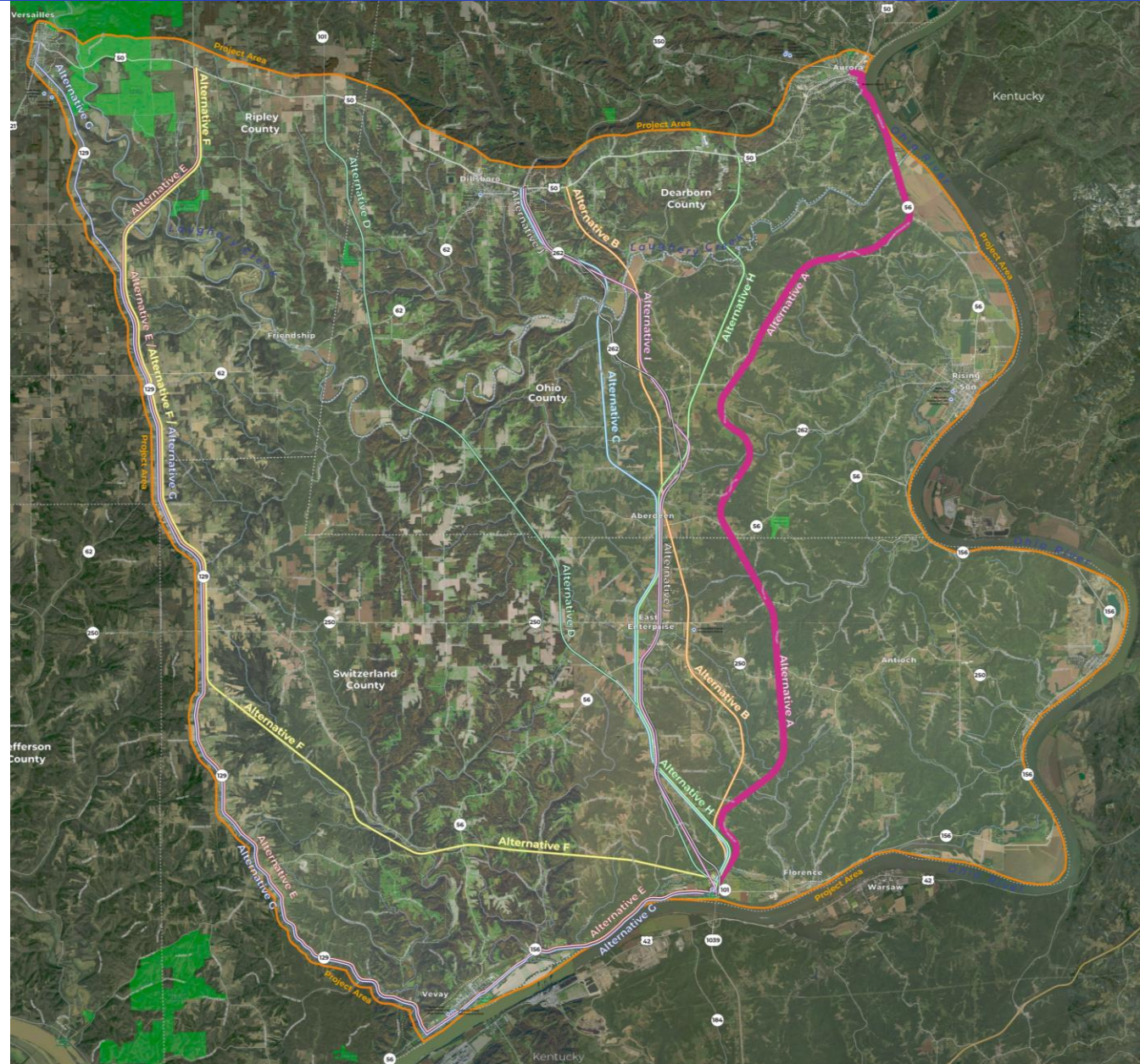
- Avoided impacts to residences, businesses, and environmental resources where possible
- Preliminary alternatives take advantage of existing roadway corridors where possible
- Range of routes help project team better understand the pros and cons of each alternative



PRELIMINARY ALTERNATIVES

Alternative A

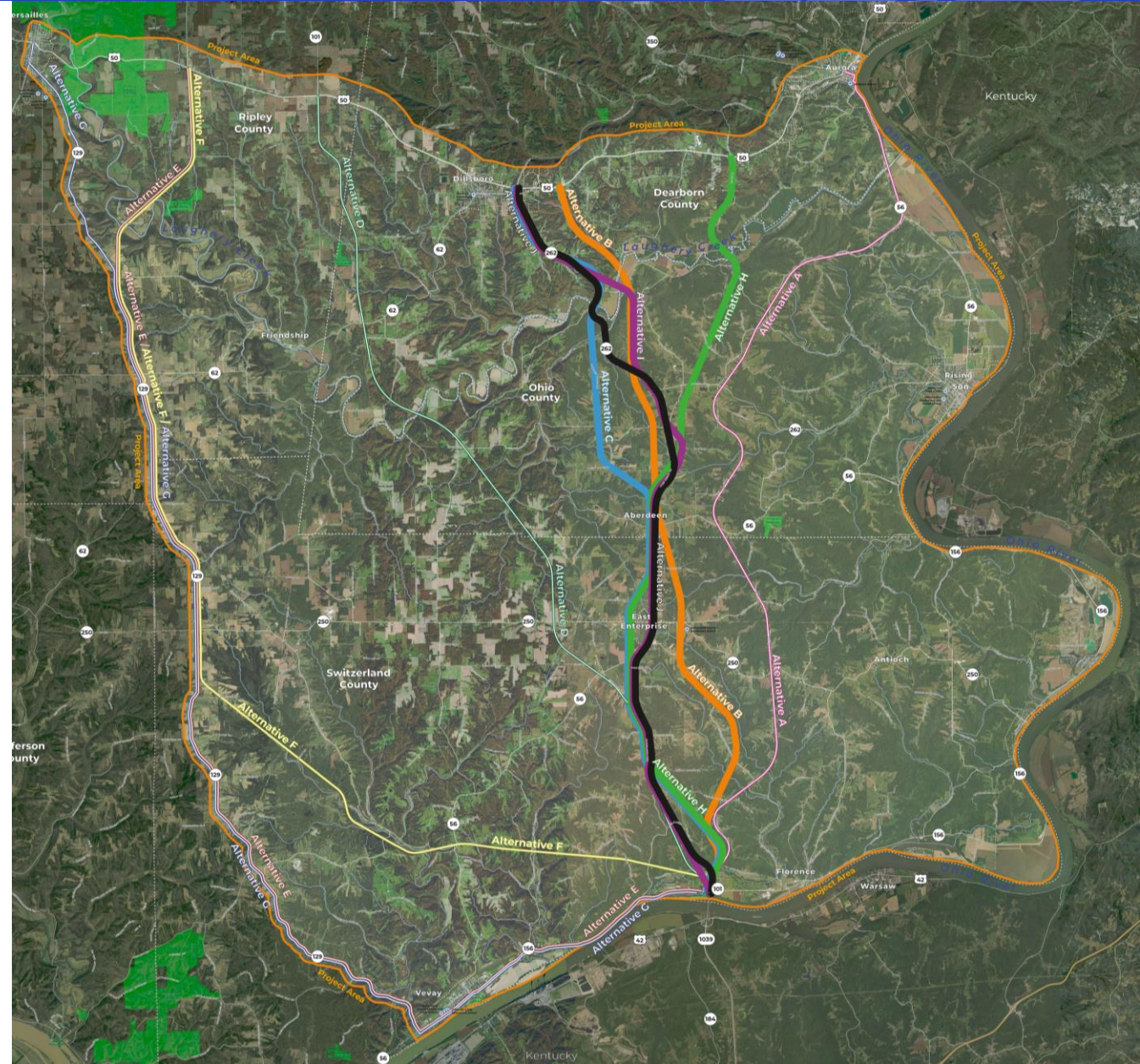
- Connects to Aurora



PRELIMINARY ALTERNATIVES

Alternatives B/C/H/I/J

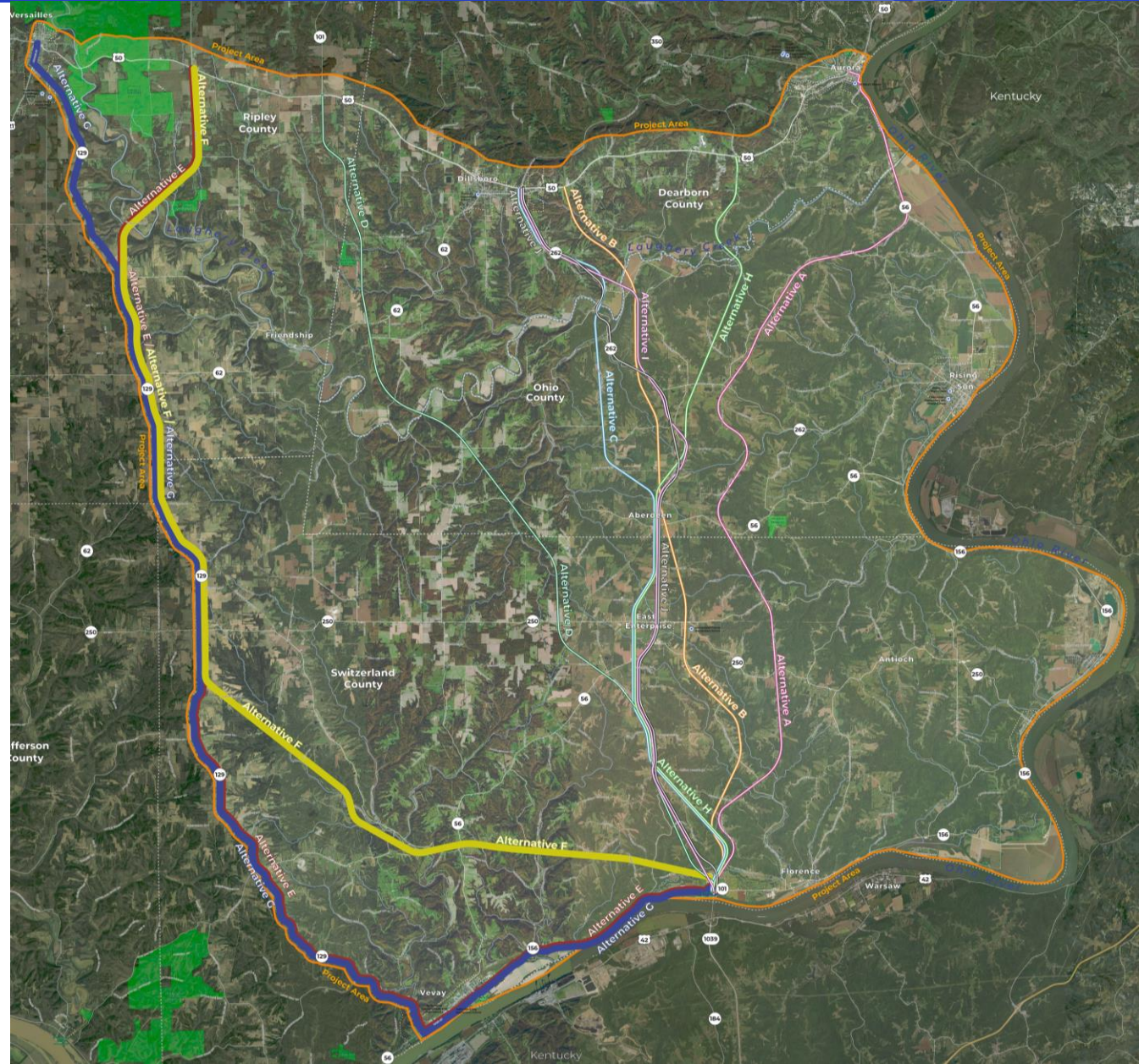
- These alternatives provide Dillsboro connection
- Alternatives C, H, I, and J use a combination of existing roads and new alignment
- Alternative B uses all new alignment (only alternative)
- Laughery Creek crossings are generally in the area of SR 262 or Nelson Road.



PRELIMINARY ALTERNATIVES

Alternatives E/F/G

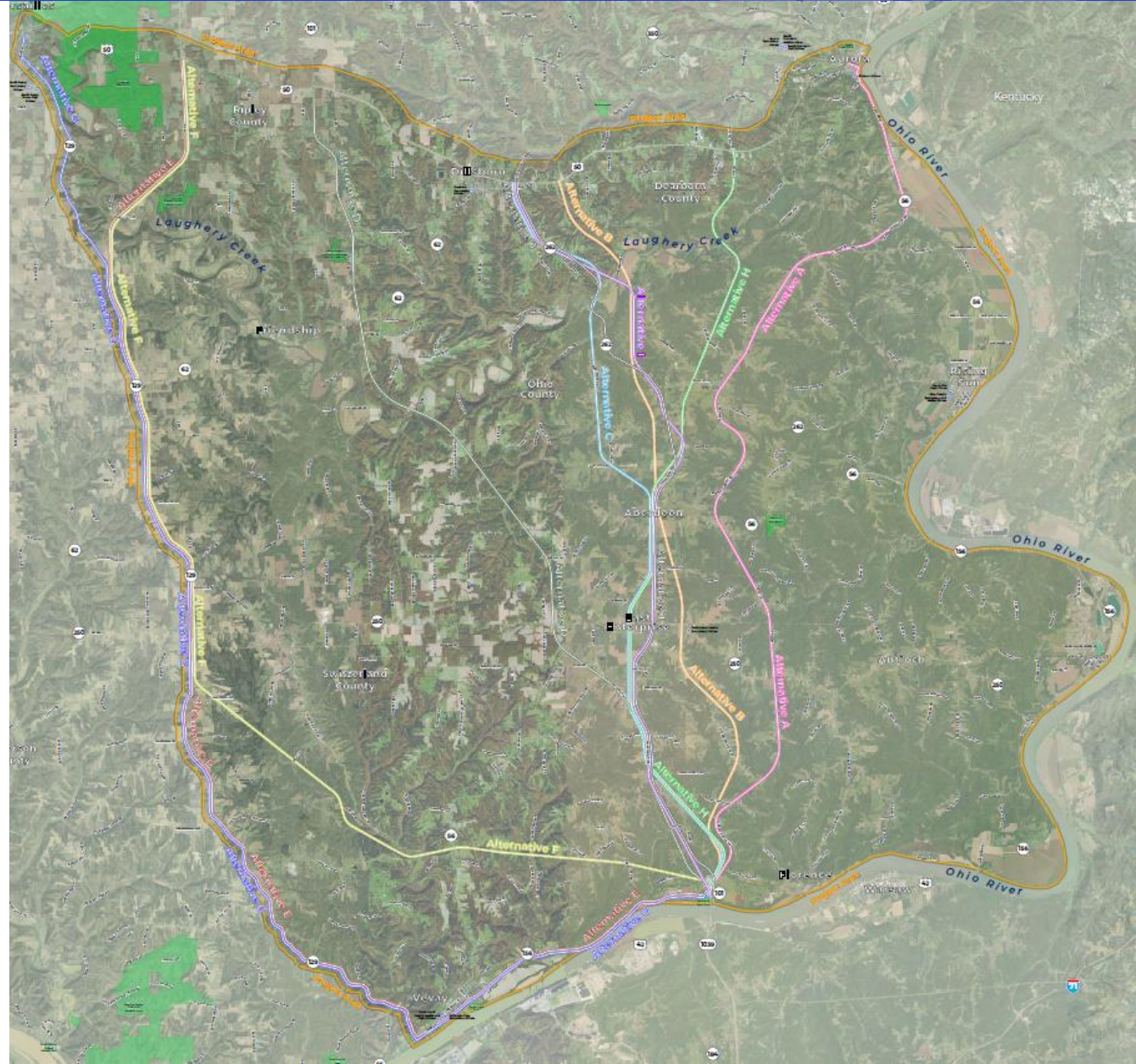
- Use portions of SR 156/56/129
- Connect to US 50 in/near Versailles
- Options to travel through or bypass Vevay and Versailles



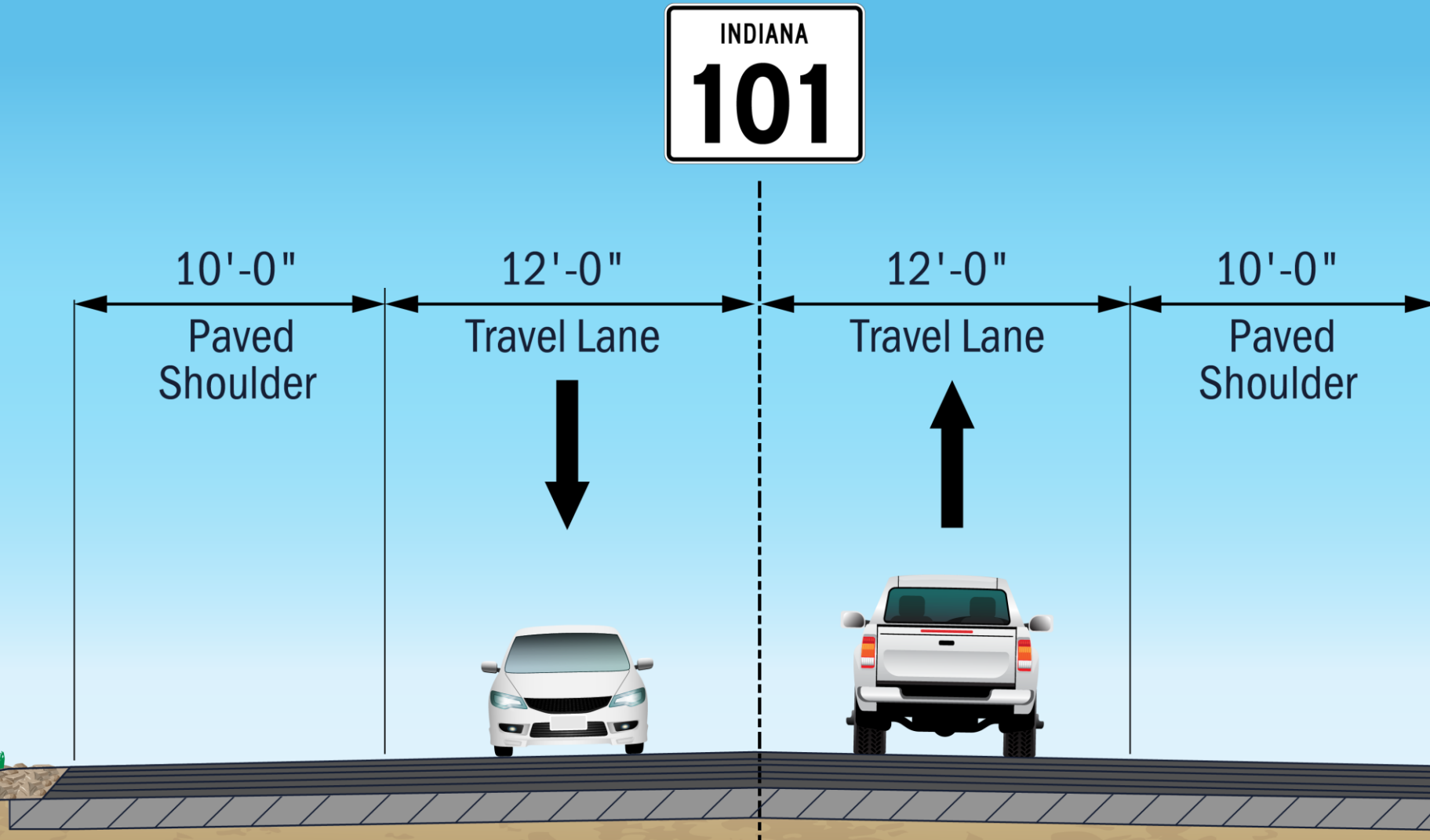
PRELIMINARY ALTERNATIVES FEEDBACK

We want your input!

- Which preliminary alternatives meet the needs of the project area and why?
- Which connection location along US 50 best meets the needs of the project area?
- Do you have suggestions for improving any alternatives?



PROPOSED TYPICAL SECTION



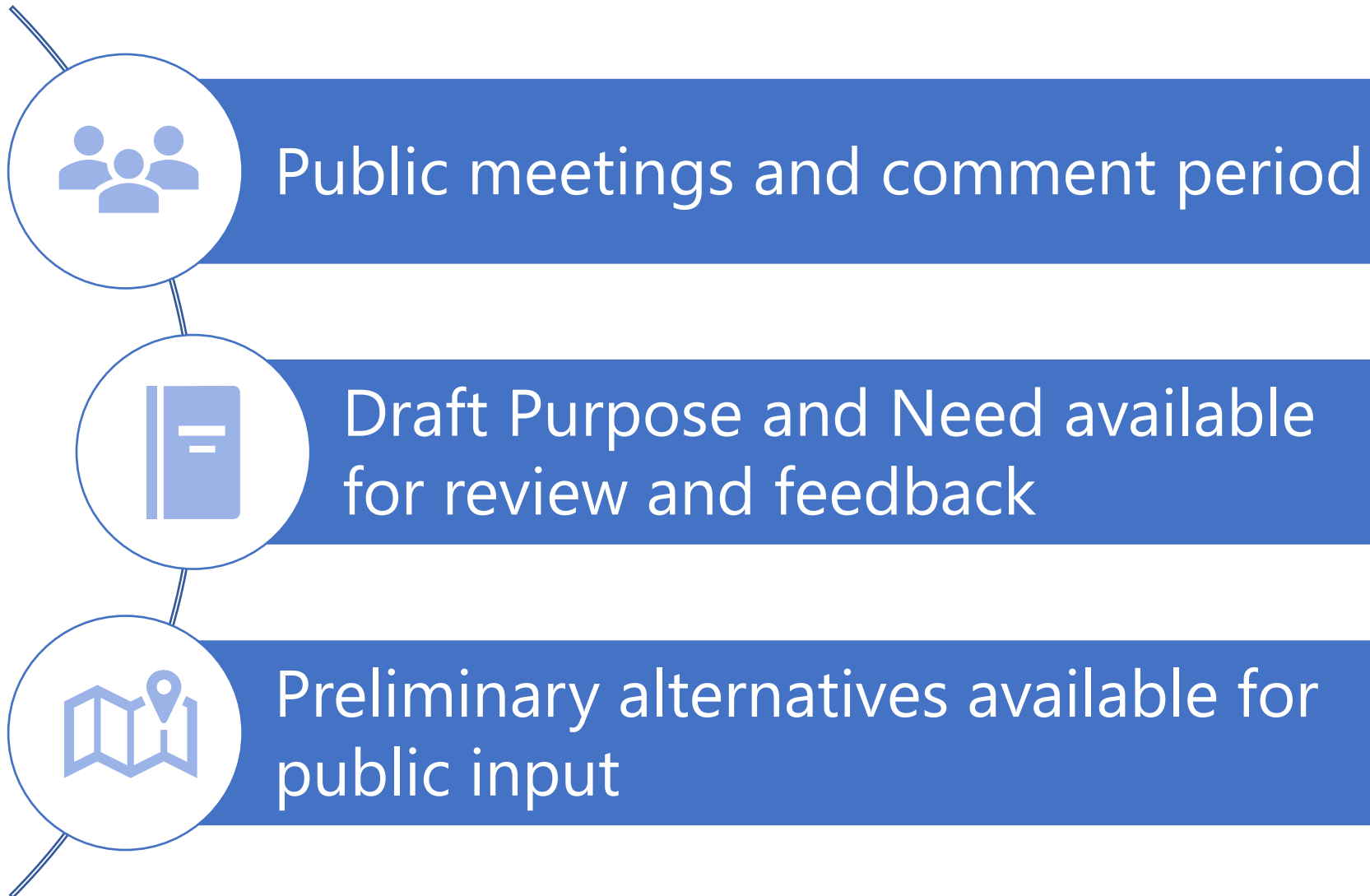
Proposed 2-lane roadway | One lane in each direction





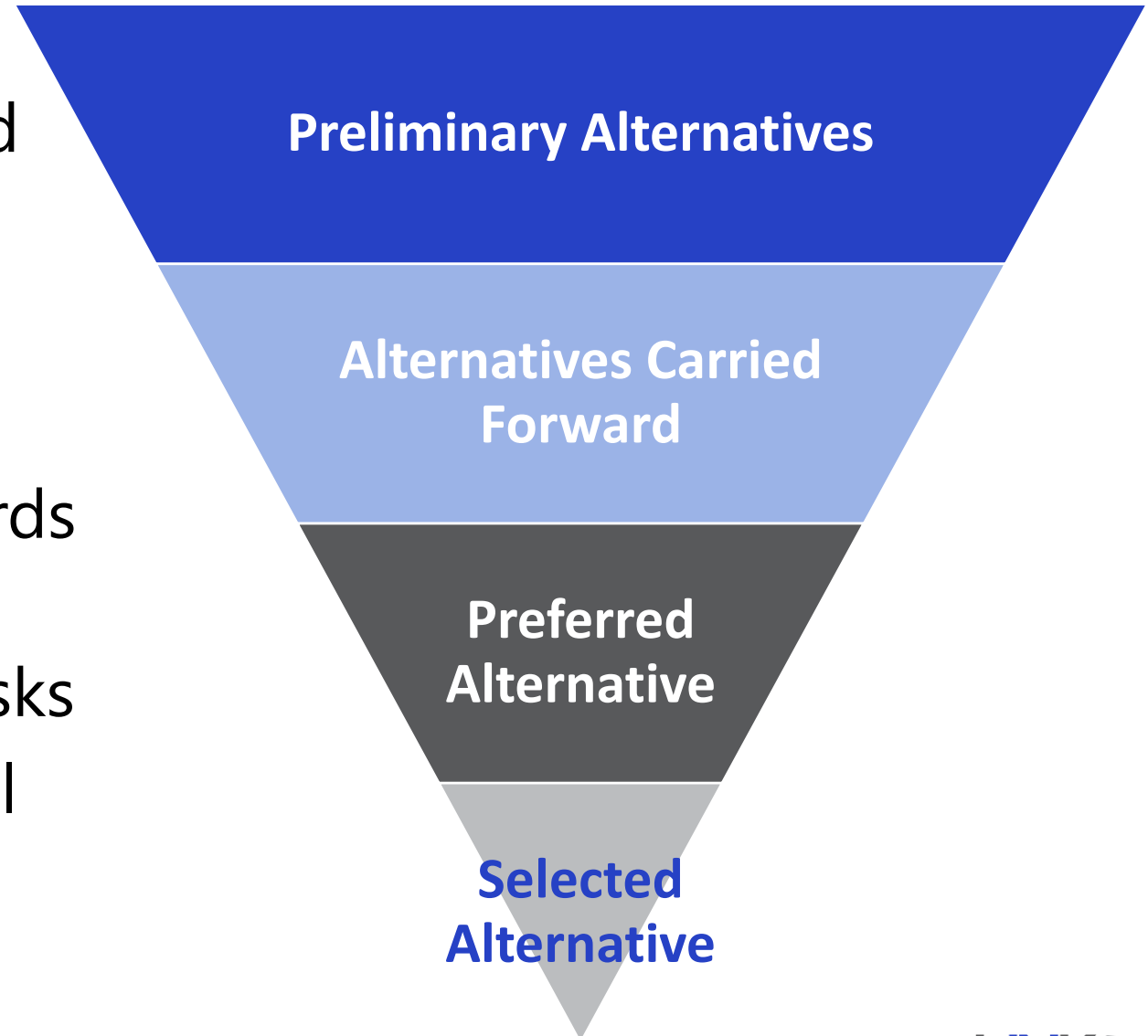
PROJECT PROCESS

WHAT IS HAPPENING NOW



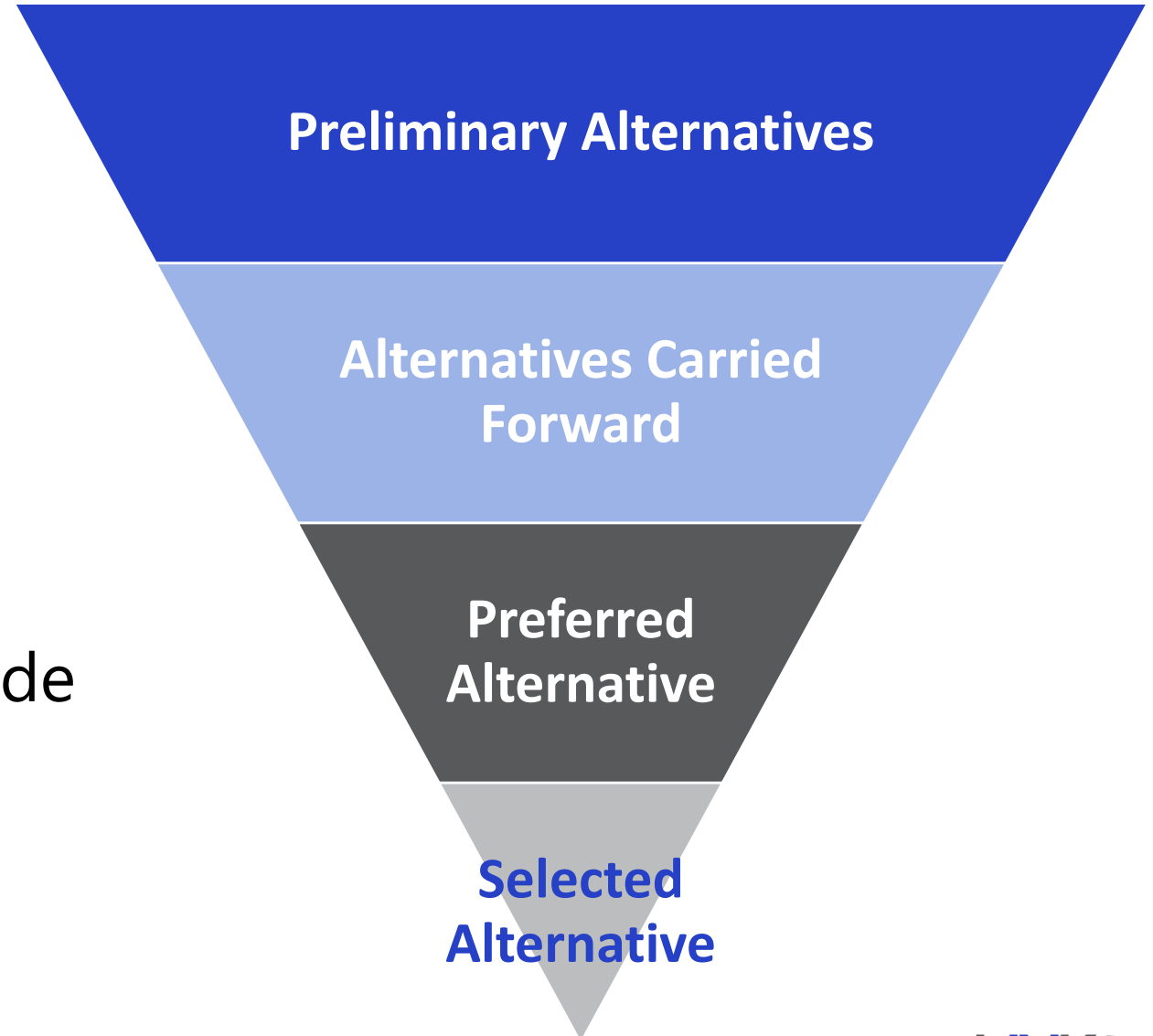
WHAT HAPPENS NEXT

- Alternatives are screened based on Purpose and Need
 - Reduce travel time
 - Improve safety
 - Meet current design standards
 - Above Laughery Creek floodplain; minimize slide risks
- Alternatives carried forward will be developed further

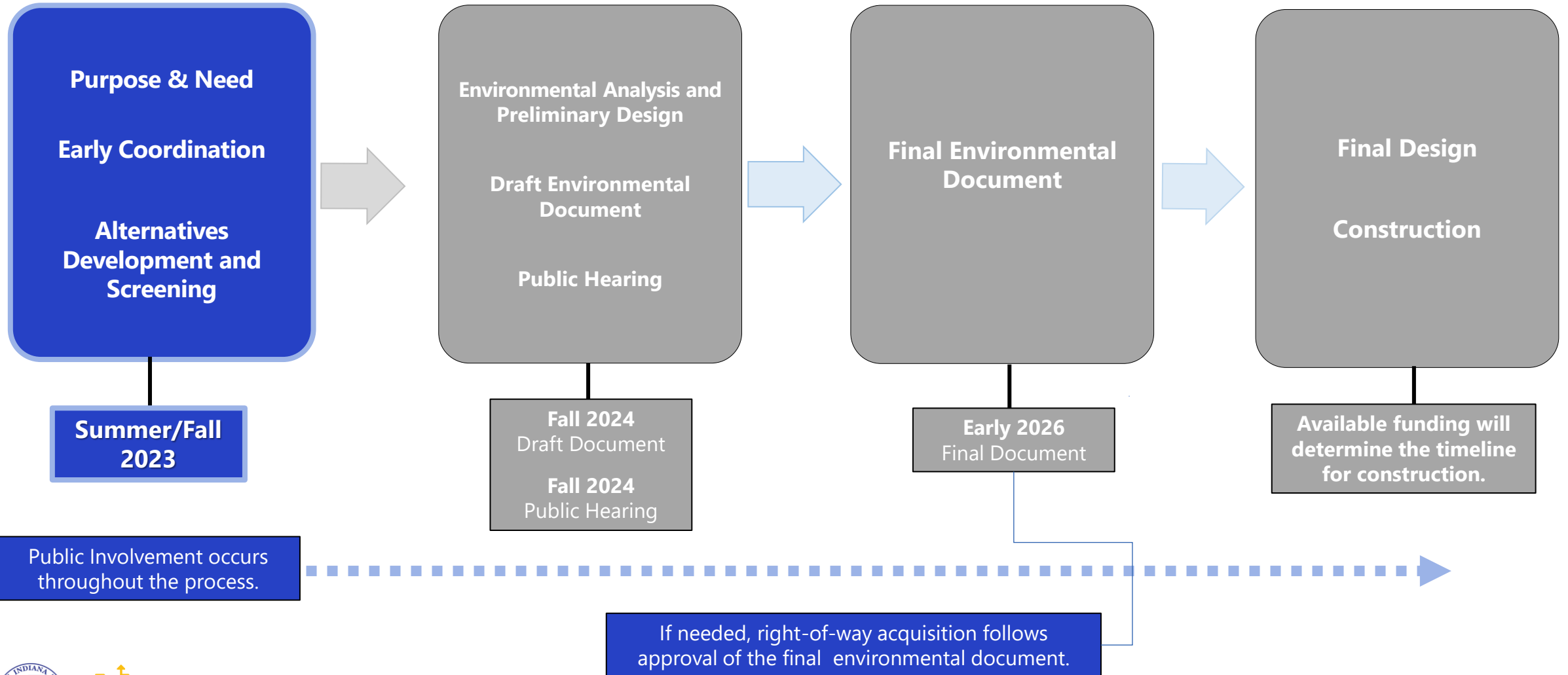


WHAT HAPPENS NEXT

- Feedback from the public and agencies guides alternative refinements.
- Elements from different alternatives may be combined or new routes may emerge.
- Detailed field surveys will provide additional data to help screen alternatives.



ENVIRONMENTAL ANALYSIS PROCESS





NEXT STEPS

WHAT TO EXPECT



LINK 101

PROJECT TIMELINE

EARLY 2023

Project Introduction

Public Information Meeting

FALL 2024

Draft Environmental Document

Public Hearing

EARLY 2026

FINAL ENVIRONMENTAL DOCUMENT

2023

2024

2025

2026

SUMMER 2023

Alternatives Development

Public Information Meeting

SUMMER 2024

Preferred Alternative Identified



PUBLIC INFORMATION MEETINGS

- Public meetings **August 2 and August 3**
 - Thursday, August 3 | Switzerland Co. Middle/ Jefferson-Craig Elementary from 5:30 to 7:30 p.m. with 6 p.m. presentation
- Virtual meeting **Tuesday, Aug. 8**
 - 6 p.m. start time
 - Register at bit.ly/VirtualMeetingLink101
- Public hearings expected Fall 2024; preferred alternative identified

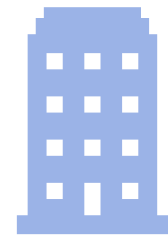
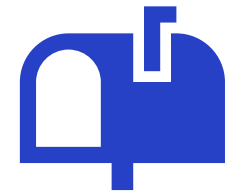
WE'RE LISTENING

- Community Advisory Committee
- Environmental Justice Working Group
- Resource Agency Committee
- Section 106 Consulting Parties
- Small group presentations
- Public meetings at milestones
- Social media and project website
- Project office in Vevay
- Mobile Office Hours in Dillsboro



SHARE YOUR FEEDBACK

- **We want your feedback** on the draft Purpose and Need and preliminary alternatives.
- Several ways to share comments:
 - **Tonight** by completing a comment form
 - **Online** at Link101Corridor.com
 - **Via mail** to project office
 - **Project office** or **mobile office** visit
 - **Locations** around project area
- Comments associated with public meetings accepted through **September 8, 2023**.



SHARE YOUR FEEDBACK

Additional Opportunities: Verbal Comments

Recording Station

- Located within the Comment Station
- Talk to a Project Team member
- Transcribed comments added to project record

Comment Session at 7 p.m.

- Sign up to speak; speakers called in order
- Comments limited to 1:30 minutes
- Comments will be recorded.
- Transcribed comments added to project record



MOBILE OFFICE HOURS

Dillsboro Public Library

- Open house format
- Stop by with questions, share feedback
- **August 8th** and **15th**
from **11 a.m.** to **5 p.m.**
- Review maps and materials, complete a comment form and talk with the Project Team.



Dillsboro Public Library
10151 Library Lane
Dillsboro, IN 47018

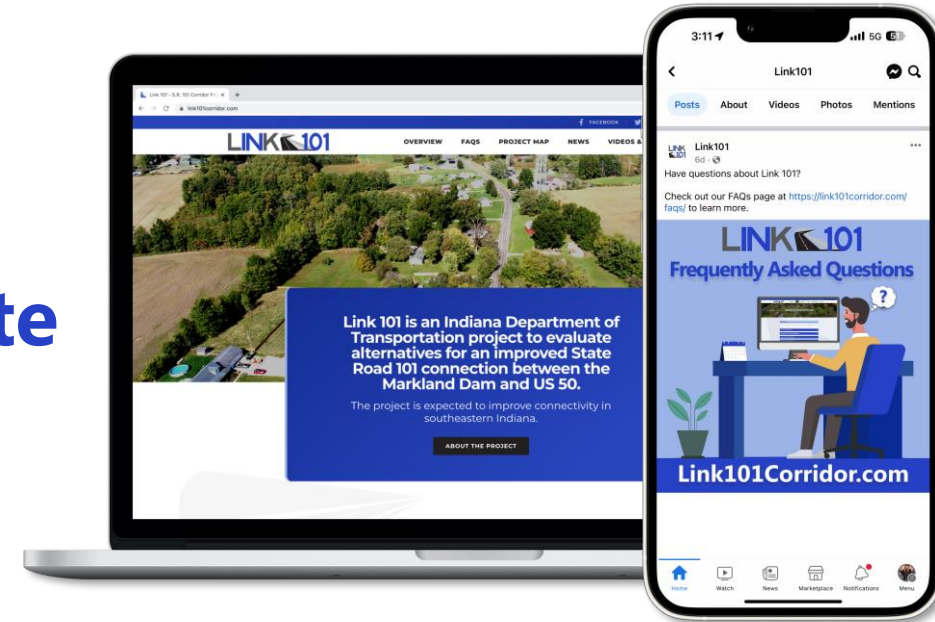
PROJECT MATERIALS AT AREA LOCATIONS

- Project materials will be posted at a dozen locations in the project area.
- Review materials and share feedback.
- Project Team will collect completed forms at the end of the comment period.

Location	City
Dillsboro Public Library	Dillsboro
Dillsboro Town Hall	Dillsboro
Dearborn County Chamber of Commerce	Lawrenceburg
Ohio County Public Library	Rising Sun
Rising Sun City Building	Rising Sun
Versailles Town Hall	Versailles
Ripley County Indiana Tourism Bureau	Versailles
Switzerland County Public Library	Vevay
Switzerland County YMCA	Vevay

FOLLOW OUR PROGRESS

- [Link101Corridor.com](https://link101corridor.com)
- Text “**INDOT LINK101**” to **468311**
- Sign up for **email updates** on **website**
- Social Media
 - **Facebook:** Link 101 Corridor
 - **Twitter:** @Link101Corridor



PROJECT OFFICE

Link 101 Project Office

Switzerland County Technology
and Education Center, 2nd floor



844-Link101 (844-546-5101)



Link101Corridor.com



info@Link101Corridor.com

We're open **Monday** and **Wednesday** from
10 a.m. to 3 p.m. and by appointment.





THANK YOU

August 2, 2023