

WELCOME

PUBLIC INFORMATION MEETING

LNK



101

SR 101 CORRIDOR PROJECT
SOUTHEAST INDIANA





LINK



SR 101 CORRIDOR PROJECT
SOUTHEAST INDIANA

PROJECT OVERVIEW



PROJECT AREA



The Link 101 project area includes portions of Switzerland, Ohio, Dearborn and Ripley counties.



PROJECT OVERVIEW

- Link 101 will identify a selected alternative for an improved State Road 101 connection between the Markland Dam and US 50.
- A range of alternatives will be evaluated.
- The SR 101 extension is expected to provide more direct access to I-71 and US 50.
- The project is in the environmental analysis and preliminary design stage.

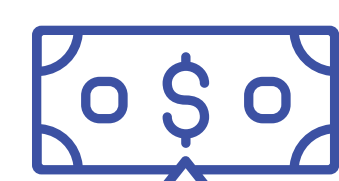
ENVIRONMENTAL STUDY



The study will determine the Purpose and Need—"the why"—for the project.



It will consider the **function** and **fit** of each alternative within the project area and local communities.



It will analyze the benefits, impacts and costs of alternatives developed by the Project Team.



This phase of the project is expected to take 3 years and will select an alternative to move into the final design and construction phase.



Previous Studies: In 2003, INDOT conducted the SR 101 Corridor Improvement Feasibility/NEPA Study.





LINK



SR 101 CORRIDOR PROJECT
SOUTHEAST INDIANA


SHARE YOUR THOUGHTS



SHARE YOUR THOUGHTS

- Where are your biggest safety concerns in the project area?
- What connectivity is needed and would serve you best?
- Are there sensitive environmental resources along the corridor (wetlands, cemeteries, historic properties, etc.) that we need to be aware of?
- What else do you want to let us know?

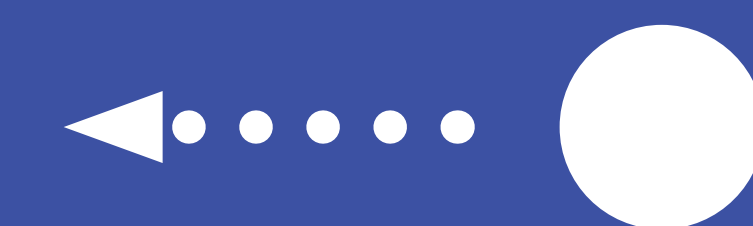
Please consider these issues and write your ideas on the maps on the tables.



What is your biggest concern traveling within the project area?

CONNECTIVITY (Ability To Get From Point A To Point B)

Please use the dot provided to mark your top concern.



SAFETY (Crashes, Pedestrian Safety, Bicyclists)

TRAFFIC CONGESTION

ROADWAY CONDITIONS (Narrow Lanes, Sharp Curves, Steep Grade, Etc.)

OTHER CONCERNS

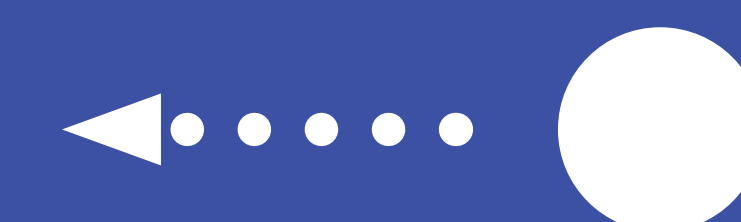
SHARE YOUR THOUGHTS

When you travel in the project area, where do you go?

LOCAL TRAVEL

REGIONAL TRAVEL

Please use the dot provided to mark your travel habits.



Write your thoughts on a sticky note to share your feedback with the Project Team.



- Share improvements you most want to see in the project area.
- Share your concerns about driving in the project area.



LINK

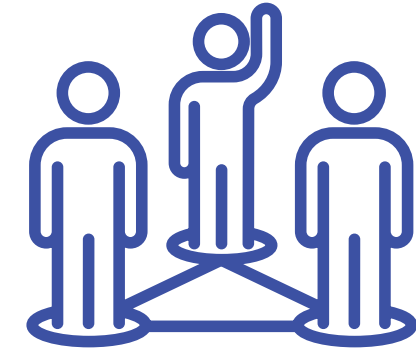


SR 101 CORRIDOR PROJECT
SOUTHEAST INDIANA

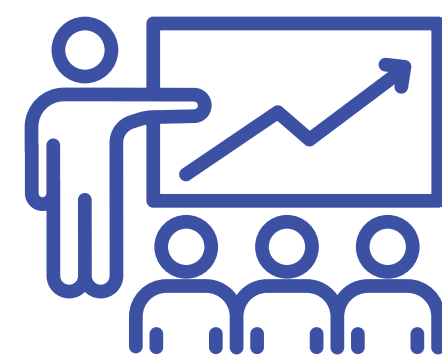
NEXT STEPS



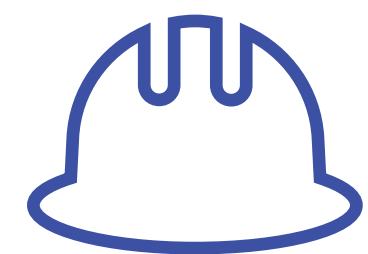
WHAT TO EXPECT



The Project Team is coordinating with local, state and federal officials.



Input from the public is an important part of developing the project.

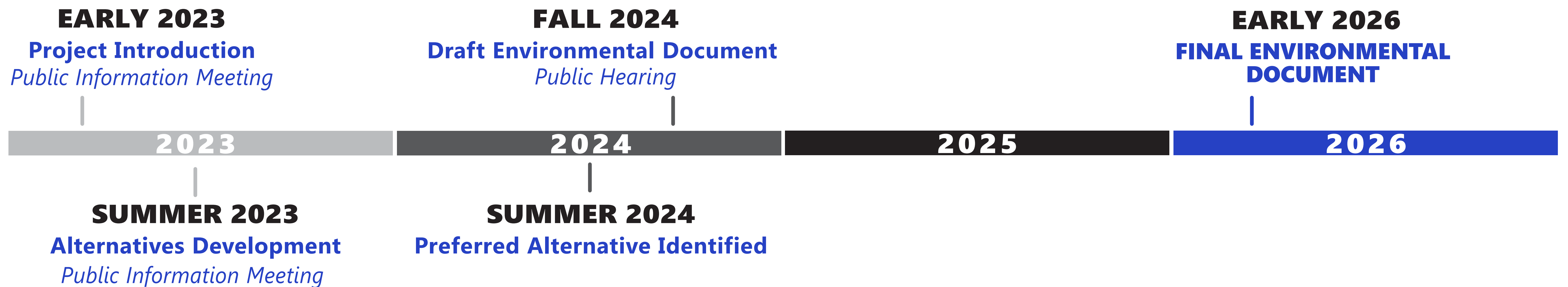


A timeline for construction will be determined at the end of the environmental study.



Right-of-way acquisition will not begin until after the environmental study is complete.

PROJECT TIMELINE



CONTACT US



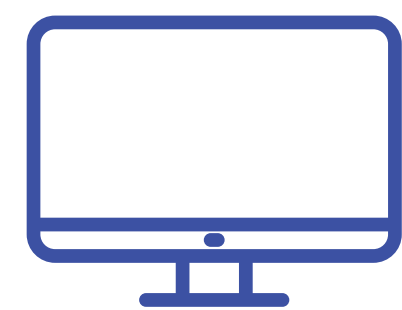
Link 101 Project Office

Switzerland County Technology and Education Center, 2nd Floor
Hours: Monday and Wednesday, 10AM to 3PM and by appointment

Mailing Address: 708 W. Seminary St., Box #8, Vevay, IN 47043



844-LINK101 (844-546-5101)

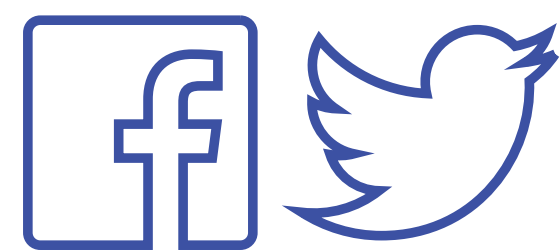


Link101Corridor.com



info@Link101Corridor.com

FOLLOW OUR PROGRESS



Link 101 Corridor



*Sign up for email updates at **Link101Corridor.com***



*Text **"INDOT LINK101"** to **468311** for text updates*

Scan with your phone camera to visit the project website.

